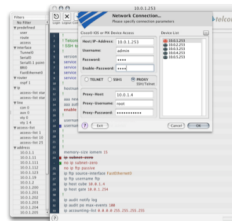
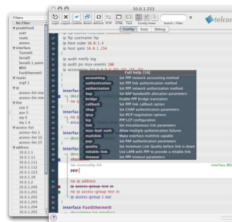
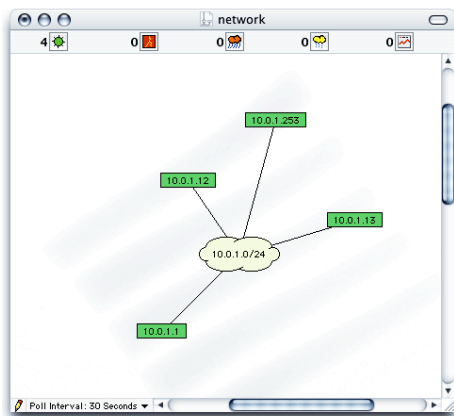




Integrating with InterMapper®

Telconi Terminal Version 1.0



INTEGRATING WITH INTERMAPPER

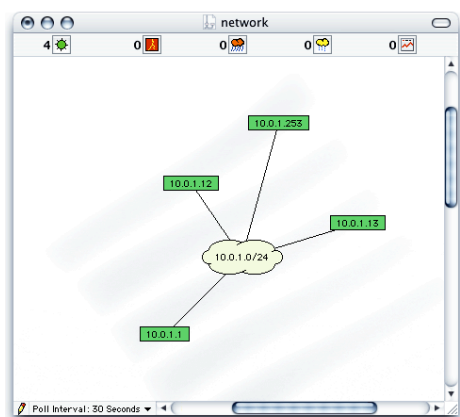
Contents

| | |
|---|---|
| About this Document | 3 |
| 1 About InterMapper® and Dartware, LLC..... | 3 |
| 2 Required Software Versions | 3 |
| 3 Setting up Telconi Terminal as a Helper Application | 4 |
| 3.1 Setting up InterMapper® on MacOS X..... | 5 |
| 3.1.1 About MacOS X and AppleScript..... | 5 |
| 3.1.2 Controlling Telconi Terminal using AppleScript | 5 |
| 3.1.3 Using AppleScript with the Unix Command Line | 6 |
| 3.1.4 InterMapper® Helper Application Configuration..... | 6 |
| 3.2 Setting Up InterMapper® on Microsoft Windows..... | 7 |
| 3.2.1 InterMapper® Helper Application Configuration..... | 7 |
| 3.3 Setting up InterMapper® Unix/Linux..... | 7 |
| 3.3.1 InterMapper® Helper Application Configuration..... | 7 |
| 4 Launching Telconi Terminal from InterMapper® | 8 |

About this Document

This description is intended to illustrate how to setup the InterMapper® application to work together with *Telconi Terminal*. It might also help users trying to integrate *Telconi Terminal* with other network management systems and environments.

1 About InterMapper® and Dartware, LLC



InterMapper® is a SNMP based, graphical network monitoring and node management application. It allows you to visualize your network and to monitor and inspect your network status. In addition, InterMapper® Remote allows you access one or more monitoring servers remotely.

InterMapper® implements the notion of helper applications. Helper applications are invoked by right-clicking one of the nodes on the network map. *Telconi Terminal* can be used as a helper application for Cisco IOS® and PIX based devices.

The InterMapper® product is being produced and offered by Dartware, LLC. For more information about InterMapper® and Dartware, LLC, please visit their website <http://www.dartware.com>, or contact:

Dartware, LLC
10 Buck Road
PO Box 130
Hanover, NH 03755-0130 USA
Phone: 603-643-2268
Fax: 603-643-2289
Email: info@dartware.com, sales@dartware.com

2 Required Software Versions

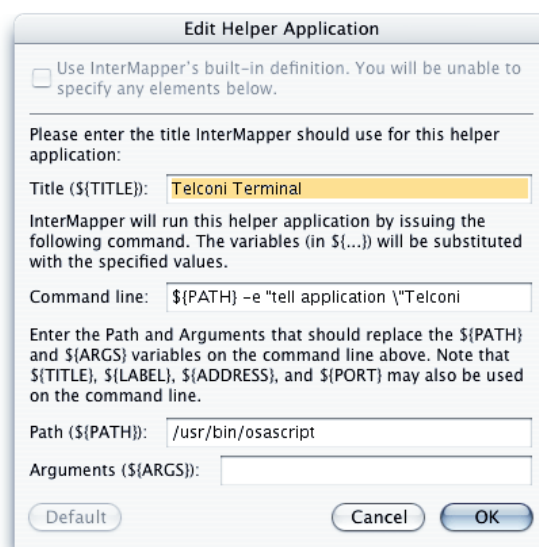
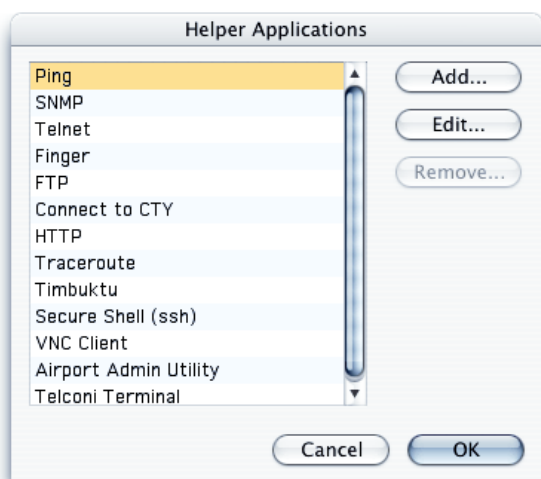
In order to use this functionality, you need to upgrade to *Telconi Terminal Version 1.0* or later.

For Testing, we used *InterMapper® Version 4.2.4*. Other versions will also work as long the helper application interface is identical.

3 Setting up Telconi Terminal as a Helper Application

On all platforms, you will need to add *Telconi Terminal* as a helper application for InterMapper®. The various parameters you have to enter depend the platform.

First, startup InterMapper® and right-click (or Option-Click on MacOS X) on any **node**. Chose the **Customize** option from the **Launch** submenu. In the **Helper Applications** dialog, click on **Add**:



The dialogs above illustrate the setup processes on MacOS X. Other platforms will expose similar dialogs to configure additional helper applications.

3.1 Setting up InterMapper® on MacOS X

3.1.1 About MacOS X and AppleScript

Unlike on the other supported platforms, *Telconi Terminal* on MacOS X used AppleScript instead of command line arguments.

Native MacOS X applications usually execute as a single instance. Therefore, applications need to be notified while already running instead of just starting up another instance with different command line options. MacOS X's facility to control already running applications is AppleScript.

3.1.2 Controlling Telconi Terminal using AppleScript

As the time of writing, *Telconi Terminal* implements a very simple AppleScript interface. Future versions will offer more flexibility and control.

3.1.2.1 Application Startup

If *Telconi Terminal* is being invoked from within another application, we first have to make sure that it is running. The following AppleScript will startup *Telconi Terminal* (if not already running) and put it's window in the front:

```
tell the application "Telconi Terminal"
    activate
end tell
```

Please Note: This will only function correctly if MacOS X already knows how to find the *Telconi Terminal* application. Make sure you only have one and the latest version of *Telconi Terminal* installed. MacOS X will learn about *Telconi Terminal* as you copy/drag it to your hard disk with the Finder.

3.1.2.2 Setting the Hostname / IP-Address

The following AppleScript will bring up the connection dialog of *Telconi Terminal* for the specified hostname or IP-Address. If the host is known to *Telconi Terminal*, all connection parameters will be loaded from the device database. Otherwise, you will have to enter the remaining connection parameters for the first time you connect:

```
tell the application "Telconi Terminal"
    set host to "10.0.1.253"
end tell
```

3.1.3 Using AppleScript with the Unix Command Line

AppleScript can be also used from the Unix command line utilizing the *osascript* command. The following shell script activates *Telconi Terminal* and sets the host to the first argument:

```
#!/bin/sh

HOST=$1

osascript -e "tell the application \"Telconi Terminal\"" \
-e "activate" \
-e "set host to \"${HOST}\"" \
-e "end tell"

# EOF
```

To connect to a router with the address 10.0.1.253, the script above can be called like:

```
bash$ tt 10.0.1.253
```

3.1.4 InterMapper® Helper Application Configuration

The following parameters should be used:

Title (\${TITLE}): **Telconi Terminal**

Command line: **\${PATH} -e "tell application \"Telconi Terminal\"" -e "activate" -
e "set host to \"\${ADDRESS}\"" -e "end tell";exit**

Path (\${PATH}): **/usr/bin/osascript**

Arguments (\${ARGS}): **(EMPTY)**

Please Note: The command line is typed as a single line. The *exit* command at the end of the line will close the temporary Terminal window InterMapper® opens for each helper application.

3.2 Setting Up InterMapper® on Microsoft Windows

On Microsoft Windows versions, multiple instances of *Telconi Terminal* can be invoked. Hence, Integration with InterMapper® will work with a simple command line option, as follows:

3.2.1 InterMapper® Helper Application Configuration

Title ({TITLE}): **Telconi Terminal**

Command line: **\${PATH} -h \${ADDRESS}**

Path ({PATH}): **\YOUR\PATH\telconi.exe**

Arguments ({ARGS}): **(EMPTY)**

Please Note: You need to enter the complete path to the **telconi.exe** file according to your configuration.

3.3 Setting up InterMapper® Unix/Linux

On Unix/Linux versions, multiple instances of *Telconi Terminal* can be invoked. Hence, Integration with InterMapper® will work with a simple command line option, as follows.

3.3.1 InterMapper® Helper Application Configuration

Title ({TITLE}): **Telconi Terminal**

Command line: **\${PATH} -h \${ADDRESS}**

Path ({PATH}): **telconi**

Arguments ({ARGS}): **(EMPTY)**

Please Note: If *Telconi Terminal* is not located in a standard executable path InterMapper® knows of, you will need to enter the complete path to the binary, such as **/usr/local/bin/telconi**.

4 Launching Telconi Terminal from InterMapper®

Once the setup is complete, *Telconi Terminal* can be simply invoked by right-clicking (or option-click on MacOS X) a node in InterMapper® and selecting *Telconi Terminal* from the **Launch** submenu:

